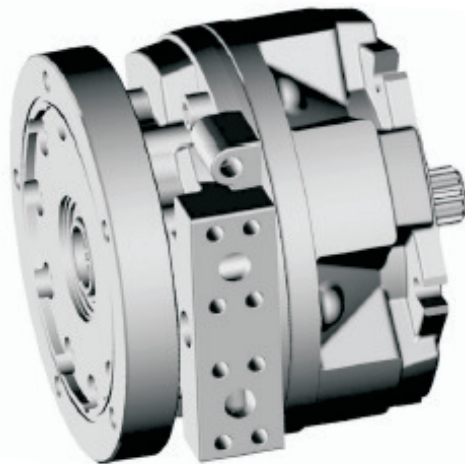


BDD1 DUAL DISPLACEMENT MOTOR DOUBLE SIDE SHAFT



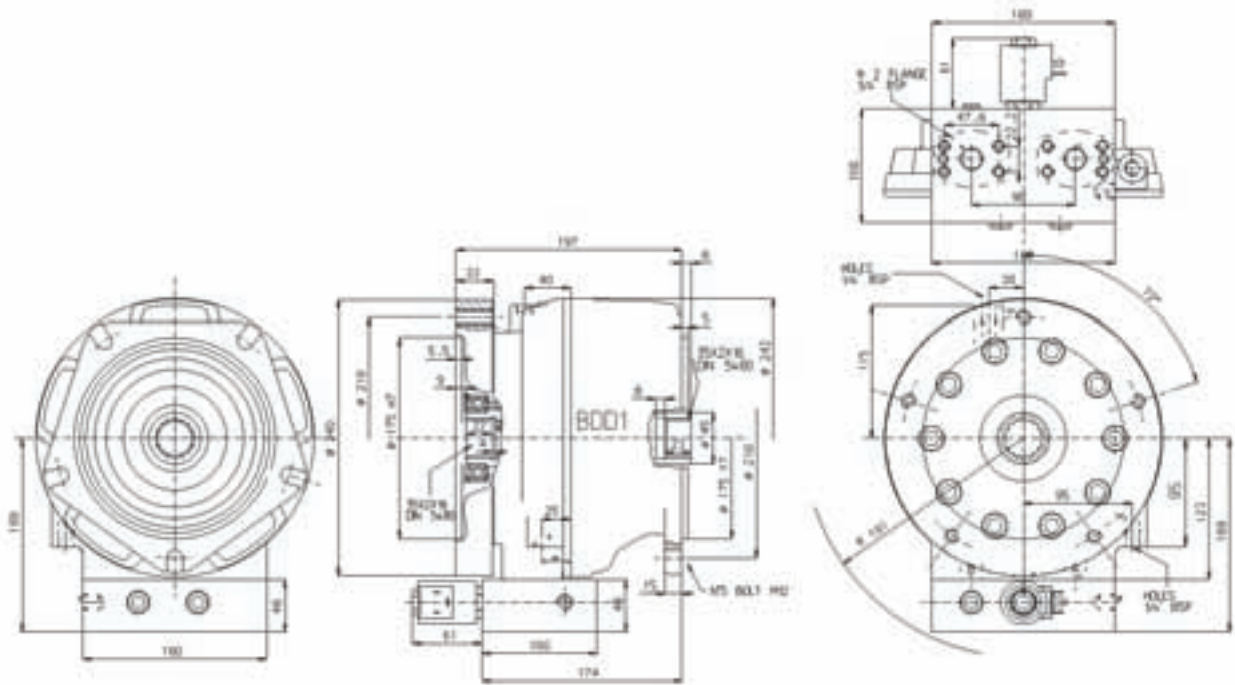
**TABELLA DI PERFORMANCE
PERFORMANCES TABLE**

		Max	Min	Max	Min	Max	Min
BDD1		100	25	175	45	250	60
Displacement / Cilindrata	[cc/rev]	99	25	172	43	243	61
Bore / Alesaggio	[mm]	28		37		44	
Stroke / Corsa	[mm]	32	8	32	8	32	8
Specific Torque / Coppia Specifica	[Nm/bar]	1.6	0.4	2.7	0.7	3.9	1.0
Pressure Rating / Press.Nominale	[bar]	250		250		250	
Peak Pressure / Pressione di Picco	[bar]	425		400		370	
Cont. Speed / Velocità cont	[rpm]	500	1500	275	1500	275	1500
Max Speed / Velocità max	[rpm]	1500	3500	435	3000	435	2500
Peak Power / Potenza di Picco	[kW]	55	42	55	42	55	42

Approximative weight	-	[kg]	Peso Approssimativo	-	[kg]
Motor casing oil capacity	-	[l]	Capacità olio corpo motore	-	[l]
Max casing Pressure	15	[bar] (peak)	Pressione max in carcassa	15	[bar] (picco)
	5	[bar] (continuous)		5	[bar] (continuo)

Note:	Nota:
Continuous or average working pressure should be chosen in function of the required service lifetime (bearing lifetime)	La pressione continua o media di lavoro va determinata in funzione della vita del motore (vita dei cuscinetti)

**DIMENSIONI D'INGOMBRO
DIMENSIONAL DRAWING**



**CALETTATURE
SPLINE DATA**

35-2-16 DIN 5480			
	d_0	$\varnothing 32.0$	
	d_1	$\varnothing 35.0$	$+0.520$ $+0$ H14
	d_2	$\varnothing 31.0$	$+0.160$ $+0$ H11
	A	$\varnothing 3.5$	
	d_A	$\varnothing 27.711$	H11
	d_3	$\varnothing 34.6$	-0 -0.160 h11
	d_4	$\varnothing 30.6$	-0 -0.520 h14
	B	$\varnothing 4$	
	d_B	$\varnothing 39$	f8

ORDER CODES CODICI D'ORDINE

